

POWERDRIVE TAPER LOCK PULLEYS



TAPER LOCK PULLEYS

INTRODUCTION

POWERDRIVE IS WIDELY RECOGNISED AS A LEADING BRAND OF POWER TRANSMISSION COMPONENTS.

POWERDRIVE Taper Lock V-Belt pulleys are produced under ISO9001 conditions and meet stringent quality checks. Manufactured using fine-grain GG25 cast iron & suitable for belt speeds up to 40mtr per second, POWERDRIVE Taper Lock pulley range offers quality at affordable prices.

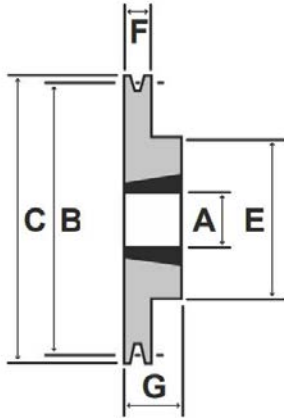
FEATURES & BENEFITS

- POWERDRIVE Taperlock pulleys , produced to consistently high quality.
- Manufactured from grade GG25 fine grain cast iron giving extended life and high resistance to wear.
- Black coloured phosphate finish.
- Statically balanced for belt speeds up to 40m/sec (Q6.3balance spec).
- Larger pulleys more than 100kg are dynamically balanced.
- Pulley groove specification conforms to ISO4183. Suitable for classical, wedge and cogg raw edge belts.

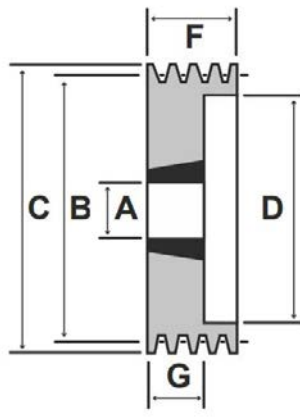


TAPER LOCK V-BELT PULLEYS CONFIGURATION

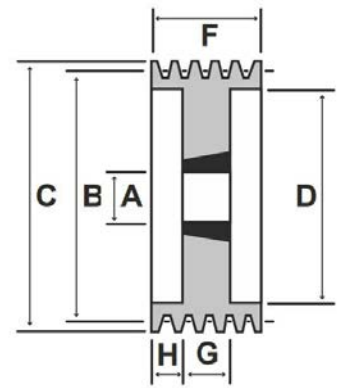
1.



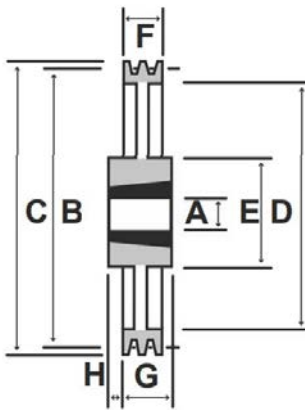
2.



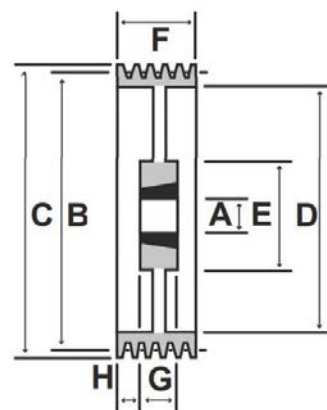
3.



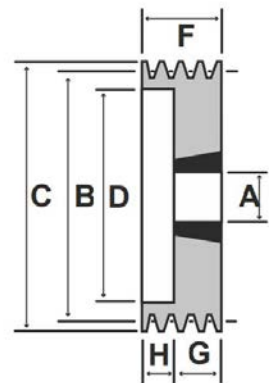
4.



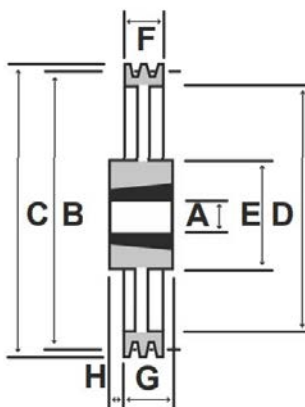
5.



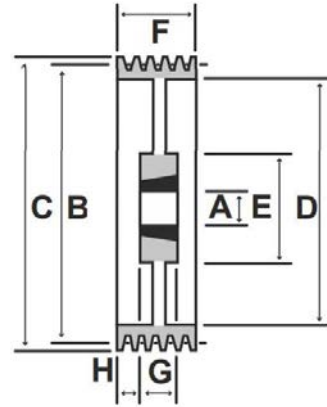
6.



7.



8.



9.

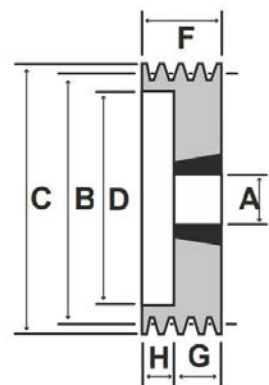


TABLE KEY

| | | | |
|---|-------------------------|---|----------------------|
| A | Inner Bore Diameter Max | F | Overall Sheave Depth |
| B | Pitch Diameter | G | Bush Seat Length |
| C | Overall Outer Diameter | H | Inner Recess Length |
| D | Inner Recess Diameter | Z | Number of Grooves |
| E | Outer Hub Diameter | | |

TAPER BUSH V-BELT PULLEYS “SPZ” SECTION

| SPZ Section | | | | | | | | | | | | | SPZ Section | | | | | | | | | | | | |
|-------------|-----|-------|---|---------|----|-------|----|-------------|----|----|-------------|----|-------------|-----|-------|---|---------|-----|-------|----|-------------|-----|------|-------------|----|
| Part Number | B | C | Z | Bush No | E | A Max | G | Pulley Type | D | H | Weight (kg) | F | Part Number | B | C | Z | Bush No | E | A Max | G | Pulley Type | D | H | Weight (kg) | F |
| SPZ 050/2 | 50 | 54.6 | 2 | 1008 | | 25 | 22 | 9 | 26 | 25 | 0.5 | 28 | SPZ 140/2 | 140 | 144.6 | 2 | 1610 | | 42 | 28 | 6 | 111 | 3 | 2.4 | 28 |
| SPZ 056/1 | 56 | 60.6 | 1 | 1008 | | 25 | 22 | 9 | 32 | 12 | 0.5 | 16 | SPZ 140/3 | 140 | 144.6 | 3 | 2012 | | 50 | 32 | 2 | 111 | | 2.8 | 40 |
| SPZ 056/2 | 56 | 60.6 | 2 | 1008 | | 25 | 22 | 9 | 32 | 27 | 0.56 | 28 | SPZ 140/4 | 140 | 144.6 | 4 | 2012 | | 50 | 32 | 2 | 111 | | 3.2 | 52 |
| SPZ 060/1 | 60 | 64.6 | 1 | 1008 | 56 | 25 | 22 | 1 | | | 0.32 | 16 | SPZ 140/5 | 140 | 144.6 | 5 | 2517 | | 60 | 45 | 2 | 111 | | 3.5 | 64 |
| SPZ 063/1 | 63 | 67.6 | 1 | 1108 | 56 | 28 | 22 | 1 | | | 0.3 | 16 | SPZ 140/6 | 140 | 144.6 | 6 | 2517 | | 60 | 45 | 2 | 111 | | 3.9 | 76 |
| SPZ 063/2 | 63 | 67.6 | 2 | 1108 | | 28 | 22 | 6 | 40 | 6 | 0.3 | 28 | SPZ 150/1 | 150 | 154.6 | 1 | 1610 | 92 | 42 | 25 | 1 | | | 1.9 | 16 |
| SPZ 063/3 | 63 | 67.6 | 3 | 1108 | | 28 | 22 | 6 | 40 | 18 | 0.5 | 40 | SPZ 150/2 | 150 | 154.6 | 2 | 2012 | 112 | 50 | 32 | 1 | | | 2.6 | 28 |
| SPZ 067/1 | 67 | 71.6 | 1 | 1108 | 60 | 28 | 22 | 1 | | | 0.6 | 16 | SPZ 150/3 | 150 | 154.6 | 3 | 2012 | | 50 | 32 | 2 | 121 | | 3 | 40 |
| SPZ 067/2 | 67 | 71.6 | 2 | 1108 | | 25 | 22 | 6 | 42 | 6 | 0.4 | 28 | SPZ 150/4 | 150 | 154.6 | 4 | 2517 | | 60 | 45 | 2 | 121 | | 3.9 | 52 |
| SPZ 067/3 | 67 | 71.6 | 3 | 1108 | | 28 | 22 | 6 | 42 | 18 | 0.6 | 40 | SPZ 150/5 | 150 | 154.6 | 5 | 2517 | | 60 | 45 | 2 | 121 | | 4.3 | 64 |
| SPZ 071/1 | 71 | 75.6 | 1 | 1108 | 60 | 28 | 22 | 1 | | | 0.4 | 16 | SPZ 150/6 | 150 | 154.6 | 6 | 2517 | | 60 | 45 | 2 | 121 | | 4.7 | 76 |
| SPZ 071/2 | 71 | 75.6 | 2 | 1108 | | 28 | 28 | 6 | 42 | 6 | 0.5 | 28 | SPZ 160/1 | 160 | 164.6 | 1 | 1610 | 92 | 42 | 25 | 1 | | | 2.1 | 16 |
| SPZ 071/3 | 71 | 75.6 | 3 | 1108 | | 28 | 22 | 6 | 42 | 18 | 0.6 | 40 | SPZ 160/2 | 160 | 164.6 | 2 | 2012 | 112 | 50 | 32 | 1 | | | 2.8 | 28 |
| SPZ 075/1 | 75 | 79.6 | 1 | 1108 | 60 | 28 | 22 | 1 | | | 0.4 | 16 | SPZ 160/3 | 160 | 164.6 | 3 | 2012 | | 50 | 32 | 2 | 131 | | 3.2 | 40 |
| SPZ 075/2 | 75 | 79.6 | 2 | 1210 | | 32 | 28 | 6 | 51 | 3 | 0.6 | 28 | SPZ 160/4 | 160 | 164.6 | 4 | 2517 | | 60 | 45 | 2 | 131 | | 4.7 | 52 |
| SPZ 075/3 | 75 | 79.6 | 3 | 1210 | | 32 | 25 | 6 | 51 | 15 | 0.6 | 40 | SPZ 160/5 | 160 | 164.6 | 5 | 2517 | | 60 | 45 | 2 | 131 | | 5.1 | 64 |
| SPZ 080/1 | 80 | 84.6 | 1 | 1210 | 75 | 32 | 25 | 1 | | | 0.5 | 16 | SPZ 160/6 | 160 | 164.6 | 6 | 2517 | | 60 | 45 | 2 | 131 | | 5.5 | 76 |
| SPZ 080/2 | 80 | 84.6 | 2 | 1210 | | 32 | 28 | 6 | 51 | 3 | 0.6 | 28 | SPZ 170/1 | 170 | 174.6 | 1 | 1610 | 92 | 42 | 25 | 1 | | | 2.5 | 16 |
| SPZ 080/3 | 80 | 84.6 | 3 | 1210 | | 32 | 25 | 6 | 51 | 15 | 0.8 | 40 | SPZ 170/2 | 170 | 174.6 | 2 | 2012 | 112 | 50 | 32 | 1 | | | 2.9 | 28 |
| SPZ 080/4 | 80 | 84.6 | 4 | 1210 | | 32 | 25 | 6 | 51 | 27 | 0.9 | 52 | SPZ 170/3 | 170 | 174.6 | 3 | 2012 | | 50 | 32 | 2 | 141 | | 3.2 | 40 |
| SPZ 085/1 | 85 | 89.6 | 1 | 1210 | 80 | 32 | 25 | 1 | | | 0.6 | 16 | SPZ 180/1 | 180 | 184.6 | 1 | 1610 | 92 | 42 | 25 | 1 | | | 2.8 | 16 |
| SPZ 085/2 | 85 | 89.6 | 2 | 1610 | | 42 | 28 | 6 | 60 | 3 | 0.7 | 28 | SPZ 180/2 | 180 | 184.6 | 2 | 2012 | 112 | 50 | 32 | 8 | 152 | 3 | 3 | 28 |
| SPZ 085/3 | 85 | 89.6 | 3 | 1610 | | 42 | 25 | 6 | 60 | 15 | 0.8 | 40 | SPZ 180/3 | 180 | 184.6 | 3 | 2012 | 112 | 50 | 32 | 7 | 151 | 4 | 3.3 | 40 |
| SPZ 085/4 | 85 | 89.6 | 4 | 1610 | | 42 | 25 | 6 | 60 | 27 | 0.9 | 52 | SPZ 180/4 | 180 | 184.6 | 4 | 2517 | | 60 | 45 | 2 | 151 | | 6.5 | 52 |
| SPZ 085/5 | 85 | 89.6 | 5 | 1610 | | 42 | 25 | 6 | 60 | 39 | 1.3 | 64 | SPZ 180/5 | 180 | 184.6 | 5 | 2517 | | 60 | 45 | 2 | 151 | | 6.9 | 64 |
| SPZ 090/1 | 90 | 94.6 | 1 | 1210 | 80 | 32 | 25 | 1 | | | 0.7 | 16 | SPZ 180/6 | 180 | 184.6 | 6 | 2517 | | 60 | 45 | 2 | 151 | | 7.3 | 76 |
| SPZ 090/2 | 90 | 94.6 | 2 | 1610 | | 42 | 28 | 6 | 61 | 3 | 0.7 | 28 | SPZ 190/1 | 190 | 194.6 | 1 | 1610 | 92 | 42 | 25 | 4 | 162 | 12 | 3 | 16 |
| SPZ 090/3 | 90 | 94.6 | 3 | 1610 | | 42 | 25 | 6 | 61 | 15 | 0.9 | 40 | SPZ 190/2 | 190 | 194.6 | 2 | 2012 | 112 | 50 | 32 | 8 | 162 | 3 | 3.1 | 28 |
| SPZ 090/4 | 90 | 94.6 | 4 | 1610 | | 42 | 25 | 6 | 61 | 27 | 1.1 | 52 | SPZ 190/3 | 190 | 194.6 | 3 | 2012 | 112 | 50 | 32 | 7 | 161 | 4 | 3.4 | 40 |
| SPZ 090/5 | 90 | 94.6 | 5 | 1610 | | 42 | 25 | 6 | 61 | 39 | 1.4 | 64 | SPZ 200/1 | 200 | 204.6 | 1 | 2012 | 112 | 50 | 32 | 4 | 171 | 15.5 | 3.2 | 16 |
| SPZ 095/1 | 95 | 99.6 | 1 | 1210 | 85 | 32 | 25 | 1 | | | 0.8 | 16 | SPZ 200/2 | 200 | 204.6 | 2 | 2012 | 112 | 50 | 32 | 4 | 171 | 3 | 3.1 | 28 |
| SPZ 095/2 | 95 | 99.6 | 2 | 1610 | | 42 | 28 | 6 | 66 | 3 | 0.8 | 28 | SPZ 200/3 | 200 | 204.6 | 3 | 2012 | 112 | 50 | 32 | 5 | 171 | 4 | 3.6 | 40 |
| SPZ 095/3 | 95 | 99.6 | 3 | 1610 | | 42 | 25 | 6 | 66 | 15 | 1.1 | 40 | SPZ 200/4 | 200 | 204.6 | 4 | 2517 | 124 | 60 | 45 | 7 | 171 | 3.5 | 5.4 | 52 |
| SPZ 095/4 | 95 | 99.6 | 4 | 1610 | | 42 | 25 | 6 | 66 | 26 | 1.3 | 52 | SPZ 200/5 | 200 | 204.6 | 5 | 2517 | | 60 | 45 | 3 | 171 | 9.5 | 6.1 | 64 |
| SPZ 095/5 | 95 | 99.6 | 5 | 1610 | | 42 | 25 | 6 | 66 | 39 | 1.6 | 64 | SPZ 224/1 | 224 | 228.6 | 1 | 2012 | 112 | 50 | 32 | 4 | 195 | 15.5 | 3.5 | 16 |
| SPZ 100/1 | 100 | 104.6 | 1 | 1210 | 85 | 32 | 25 | 1 | | | 0.8 | 16 | SPZ 224/2 | 224 | 228.6 | 2 | 2012 | 112 | 50 | 32 | 4 | 195 | 3 | 3.4 | 28 |
| SPZ 100/2 | 100 | 104.6 | 2 | 1610 | | 42 | 28 | 6 | 71 | 3 | 1 | 28 | SPZ 224/3 | 224 | 228.6 | 3 | 2012 | 112 | 60 | 32 | 5 | 195 | 4 | 4.2 | 40 |
| SPZ 100/3 | 100 | 104.6 | 3 | 1610 | | 42 | 25 | 6 | 71 | 15 | 1.2 | 40 | SPZ 224/4 | 224 | 228.6 | 4 | 2517 | 124 | 60 | 45 | 5 | 195 | 3.5 | 6.1 | 52 |
| SPZ 100/4 | 100 | 104.6 | 4 | 1610 | | 42 | 25 | 6 | 71 | 26 | 1.4 | 52 | SPZ 224/5 | 224 | 228.6 | 5 | 2517 | 124 | 60 | 45 | 5 | 195 | 9.5 | 7.1 | 64 |
| SPZ 100/5 | 100 | 104.6 | 5 | 2012 | | 50 | 32 | 6 | 71 | 32 | 1.6 | 64 | SPZ 250/1 | 250 | 254.6 | 1 | 2012 | 112 | 50 | 32 | 4 | 221 | 8 | 3.8 | 16 |
| SPZ 100/6 | 100 | 104.6 | 6 | 2012 | | 50 | 32 | 6 | 71 | 44 | 1.9 | 76 | SPZ 250/2 | 250 | 254.6 | 2 | 2012 | 112 | 50 | 32 | 4 | 221 | 2 | 3.9 | 28 |
| SPZ 106/1 | 106 | 110.6 | 1 | 1610 | 92 | 42 | 25 | 1 | | | 0.9 | 16 | SPZ 250/3 | 250 | 254.6 | 3 | 2012 | 112 | 50 | 32 | 5 | 221 | 4 | 4.7 | 40 |
| SPZ 106/2 | 106 | 110.6 | 2 | 1610 | | 42 | 28 | 6 | 76 | 3 | 1.2 | 28 | SPZ 250/4 | 250 | 254.6 | 4 | 2517 | 124 | 60 | 45 | 5 | 221 | 3.5 | 6.8 | 52 |
| SPZ 106/3 | 106 | 110.6 | 3 | 1610 | | 42 | 25 | 6 | 76 | 15 | 1.4 | 40 | SPZ 250/5 | 250 | 254.6 | 5 | 2517 | 124 | 60 | 45 | 5 | 221 | 9.5 | 8.1 | 64 |
| SPZ 106/4 | 106 | 110.6 | 4 | 1610 | | 42 | 25 | 6 | 76 | 26 | 1.6 | 64 | SPZ 280/2 | 280 | 284.6 | 2 | 2012 | 112 | 50 | 32 | 4 | 251 | 2 | 4.9 | 28 |
| SPZ 106/5 | 106 | 110.6 | 5 | 2012 | | 50 | 32 | 6 | 76 | 32 | 1.9 | 64 | SPZ 280/3 | 280 | 284.6 | 3 | 2517 | 124 | 60 | 45 | 4 | 251 | 2.5 | 7.1 | 40 |
| SPZ 106/6 | 106 | 110.6 | 6 | 2012 | | 50 | 32 | 6 | 76 | 44 | 2.2 | 76 | SPZ 280/4 | 280 | 284.6 | 4 | 2517 | 124 | 60 | 45 | 5 | 251 | 3.5 | 8.2 | 52 |
| SPZ 112/1 | 112 | 116.6 | 1 | 1610 | 92 | 42 | 25 | 1 | | | 1 | 16 | SPZ 280/5 | 280 | 284.6 | 5 | 2517 | 124 | 60 | 45 | 5 | 251 | 9.5 | 10.51 | 64 |
| SPZ 112/2 | 112 | 116.6 | 2 | 1610 | | 42 | 28 | 6 | 83 | 3 | 1.4 | 28 | SPZ 315/1 | 315 | 319.6 | 1 | 2012 | 112 | 50 | 32 | 4 | 286 | 8 | 5.8 | 16 |
| SPZ 112/3 | 112 | 116.6 | 3 | 2012 | | 50 | 32 | 6 | 83 | 8 | 1.5 | 40 | SPZ 315/2 | 315 | 319.6 | 2 | 2012 | 112 | 50 | 32 | 4 | 286 | 2 | 5.9 | 28 |
| SPZ 112/4 | 112 | 116.6 | 4 | 2012 | | 50 | 32 | 6 | 83 | 20 | 1.7</ | | | | | | | | | | | | | | |

TAPER BUSH V-BELT PULLEYS “SPA” SECTION

| SPA Section | | | | | | | | | | | | | SPA Section | | | | | | | | | | | | |
|-------------|-----|---|----------|----|-------|----|-------------|------|----|------|-------------|----|-------------|-----|---|----------|-----|-------|----|-------------|-----|-----|-------|-------------|----|
| Part Number | B | Z | Bush No. | E | A Max | G | Pulley Type | D | H | C | Weight (kg) | F | Part Number | B | Z | Bush No. | E | A Max | G | Pulley Type | D | H | C | Weight (kg) | F |
| SPA 063/1 | 63 | 1 | 1008 | 56 | 28 | 22 | 1 | - | - | 69.2 | 0.33 | 20 | SPA 160/4 | 160 | 4 | 2517 | - | 60 | 45 | 2 | 125 | - | 166.2 | 5.2 | 65 |
| SPA 063/2 | 63 | 2 | 1008 | - | 28 | 22 | 6 | 32.5 | 13 | - | 0.38 | 35 | SPA 160/5 | 160 | 5 | 2517 | - | 60 | 45 | 3 | 125 | 18 | 166.2 | 5.56 | 80 |
| SPA 067/1 | 67 | 1 | 1108 | 56 | 28 | 22 | 1 | - | - | 73.2 | 0.35 | 20 | SPA 170/1 | 170 | 1 | 1610 | 92 | 42 | 25 | 1 | - | - | 176.2 | 2.66 | 20 |
| SPA 067/2 | 67 | 2 | 1108 | - | 28 | 22 | - | 37 | 13 | 73.2 | 0.47 | 35 | SPA 170/2 | 170 | 2 | 2012 | - | 50 | 32 | 6 | 135 | 3 | 176.2 | 4.46 | 35 |
| SPA 071/1 | 71 | 1 | 1108 | 60 | 28 | 22 | 1 | - | - | 77.2 | 0.37 | 20 | SPA 170/3 | 170 | 3 | 2517 | - | 60 | 45 | 6 | 135 | 5 | 176.2 | 5.25 | 50 |
| SPA 071/2 | 71 | 2 | 1108 | - | 28 | 22 | 6 | 40 | 13 | 77.2 | 0.54 | 35 | SPA 180/1 | 180 | 1 | 1610 | 92 | 42 | 25 | 4 | 145 | - | 186.2 | 2.1 | 20 |
| SPA 071/3 | 71 | 3 | 1108 | - | 28 | 22 | 6 | 40 | 28 | 77.2 | 0.74 | 50 | SPA 180/2 | 180 | 2 | 2012 | 108 | 50 | 32 | 7 | 146 | 1.5 | 186.2 | 5.1 | 35 |
| SPA 075/1 | 75 | 1 | 1108 | 60 | 28 | 22 | 1 | - | - | 81.2 | 0.44 | 20 | SPA 180/3 | 180 | 3 | 2517 | - | 60 | 45 | 6 | 146 | 5 | 186.2 | 6.3 | 50 |
| SPA 075/2 | 75 | 2 | 1108 | - | 28 | 22 | 6 | 44 | 13 | 81.2 | 0.65 | 35 | SPA 180/4 | 180 | 4 | 2517 | - | 60 | 45 | 2 | 146 | - | 186.2 | 7 | 65 |
| SPA 075/3 | 75 | 3 | 1108 | - | 28 | 22 | 6 | 44 | 28 | 81.2 | 0.84 | 50 | SPA 180/5 | 180 | 5 | 3020 | - | 75 | 51 | 3 | 146 | 15 | 186.2 | 6.81 | 80 |
| SPA 080/1 | 80 | 1 | 1210 | 75 | 32 | 25 | 1 | - | - | 86.2 | 0.53 | 20 | SPA 180/6 | 180 | 6 | 3020 | - | 75 | 51 | 3 | 146 | 22 | 186.2 | 6.65 | 95 |
| SPA 080/2 | 80 | 2 | 1210 | - | 32 | 25 | 6 | 50 | 10 | 86.2 | 0.62 | 35 | SPA 190/1 | 190 | 1 | 1610 | 92 | 42 | 25 | 4 | 156 | - | 196.2 | 2.31 | 20 |
| SPA 080/3 | 80 | 3 | 1210 | - | 32 | 25 | 6 | 50 | 25 | 86.2 | 0.82 | 50 | SPA 190/2 | 190 | 2 | 2012 | 108 | 50 | 32 | 6 | 156 | 1.5 | 196.2 | 3.68 | 35 |
| SPA 085/1 | 85 | 1 | 1210 | 80 | 32 | 25 | - | - | - | 91.2 | 0.68 | 20 | SPA 190/3 | 190 | 3 | 2517 | - | 60 | 45 | 6 | 156 | 5 | 196.2 | 7.1 | 50 |
| SPA 085/2 | 85 | 2 | 1210 | - | 32 | 25 | 6 | 55 | 10 | 91.2 | 0.73 | 35 | SPA 190/4 | 190 | 4 | 2517 | - | 60 | 45 | 2 | 156 | - | 196.2 | 7.95 | 65 |
| SPA 085/3 | 85 | 3 | 1210 | - | 32 | 25 | 6 | 55 | 25 | 91.2 | 0.96 | 50 | SPA 200/1 | 200 | 1 | 2012 | 108 | 50 | 32 | 4 | 165 | - | 206.2 | 2.8 | 20 |
| SPA 090/1 | 90 | 1 | 1210 | 80 | 32 | 25 | 1 | - | - | 96.2 | 0.8 | 20 | SPA 200/2 | 200 | 2 | 2517 | 123 | 60 | 45 | 8 | 165 | 5 | 206.2 | 4.7 | 35 |
| SPA 090/2 | 90 | 2 | 1610 | - | 42 | 25 | 6 | 59 | 10 | 96.2 | 0.8 | 35 | SPA 200/3 | 200 | 3 | 2517 | 123 | 60 | 45 | 7 | 165 | 2.5 | 206.2 | 5.6 | 50 |
| SPA 090/3 | 90 | 3 | 1610 | - | 42 | 25 | 6 | 59 | 25 | 96.2 | 1.1 | 50 | SPA 200/4 | 200 | 4 | 3020 | - | 75 | 51 | 2 | 165 | - | 206.2 | 8.5 | 65 |
| SPA 090/4 | 90 | 4 | 1615 | - | 42 | 38 | 6 | 59 | 27 | 96.2 | 1.4 | 65 | SPA 200/5 | 200 | 5 | 3020 | - | 75 | 51 | 3 | 156 | 15 | 206.2 | 8.96 | 80 |
| SPA 095/1 | 95 | 1 | 1210 | 85 | 32 | 25 | 1 | - | - | 101 | 0.9 | 20 | SPA 200/6 | 200 | 6 | 3020 | - | 75 | 51 | 3 | 165 | 22 | 206.2 | 10 | 95 |
| SPA 095/2 | 95 | 2 | 1610 | - | 42 | 25 | 6 | 63 | 10 | 101 | 0.9 | 35 | SPA 212/1 | 212 | 1 | 2012 | 110 | 50 | 32 | 4 | 177 | - | 218.2 | 3.85 | 20 |
| SPA 095/3 | 95 | 3 | 1610 | - | 42 | 25 | 6 | 63 | 25 | 101 | 1.3 | 50 | SPA 212/2 | 212 | 2 | 2517 | 123 | 60 | 45 | 4 | 177 | 5 | 218.2 | 6.05 | 35 |
| SPA 095/4 | 95 | 4 | 1615 | - | 42 | 38 | 6 | 63 | 27 | 101 | 1.7 | 65 | SPA 212/3 | 212 | 3 | 2517 | 123 | 60 | 45 | 5 | 177 | 2.5 | 218.2 | 6.9 | 50 |
| SPA 100/1 | 100 | 1 | 1610 | 85 | 42 | 25 | 1 | - | - | 106 | 0.9 | 20 | SPA 212/4 | 212 | 4 | 3020 | - | 75 | 51 | - | 177 | - | 218.2 | 9.53 | 65 |
| SPA 100/2 | 100 | 2 | 1610 | - | 42 | 25 | 6 | 66 | 10 | 106 | 1.1 | 35 | SPA 224/1 | 224 | 1 | 2012 | 112 | 50 | 32 | 4 | 189 | - | 230.2 | 4.02 | 20 |
| SPA 100/3 | 100 | 3 | 1610 | - | 42 | 25 | 2 | 66 | - | 106 | 1.4 | 50 | SPA 224/2 | 224 | 2 | 2517 | 124 | 60 | 45 | 4 | 189 | - | 230.2 | 6.65 | 35 |
| SPA 100/4 | 100 | 4 | 1610 | - | 42 | 28 | - | 66 | - | 106 | 1.9 | 65 | SPA 224/3 | 224 | 3 | 2517 | 124 | 60 | 45 | 5 | 189 | 2.5 | 230.2 | 7.45 | 50 |
| SPA 100/5 | 100 | 5 | 1610 | - | 42 | 25 | 2 | 66 | - | 106 | 1.9 | 80 | SPA 224/4 | 224 | 4 | 3020 | - | 75 | 51 | 2 | 189 | - | 230.2 | 11.34 | 65 |
| SPA 100/6 | 100 | 6 | 1615 | - | 42 | 38 | 3 | 66 | 30 | 106 | 2.23 | 95 | SPA 224/5 | 224 | 5 | 3020 | - | 75 | 51 | 2 | 189 | - | 230.2 | 12.3 | 80 |
| SPA 106/1 | 106 | 1 | 1610 | 92 | 42 | 25 | 1 | - | - | 112 | 0.9 | 20 | SPA 236/1 | 236 | 1 | 2012 | 112 | 50 | 32 | 8 | 202 | - | 242.2 | 4.6 | 20 |
| SPA 106/2 | 106 | 2 | 1610 | - | 42 | 25 | 6 | 72 | 10 | 112 | 1.3 | 35 | SPA 236/2 | 236 | 2 | 2517 | 124 | 60 | 45 | 4 | 202 | - | 242.2 | 7.3 | 35 |
| SPA 106/3 | 106 | 3 | 1610 | - | 42 | 25 | 2 | 72 | - | 112 | 1.6 | 50 | SPA 236/3 | 236 | 3 | 2517 | 124 | 60 | 45 | 5 | 202 | 2.5 | 242.2 | 8.2 | 30 |
| SPA 106/4 | 106 | 4 | 2012 | - | 50 | 32 | 6 | 72 | 33 | 112 | 1.7 | 65 | SPA 250/1 | 250 | 1 | 2012 | 112 | 50 | 32 | 4 | 215 | - | 256.2 | 4.74 | 20 |
| SPA 106/5 | 106 | 5 | 2012 | - | 50 | 32 | 6 | 72 | 48 | 112 | 2.01 | 80 | SPA 250/2 | 250 | 2 | 2517 | 124 | 60 | 45 | 4 | 215 | 5 | 256.2 | 6.58 | 35 |
| SPA 112/1 | 112 | 1 | 1610 | 92 | 42 | 25 | 1 | - | - | 118 | 1 | 20 | SPA 250/3 | 250 | 3 | 2517 | 124 | 60 | 45 | 5 | 215 | 2.5 | 256.2 | 7.91 | 50 |
| SPA 112/2 | 112 | 2 | 1610 | - | 42 | 25 | 6 | 78 | 10 | 118 | 1.5 | 35 | SPA 250/4 | 250 | 4 | 3020 | 159 | 75 | 51 | 5 | 215 | - | 256.2 | 10.25 | 65 |
| SPA 112/3 | 112 | 3 | 2012 | - | 50 | 32 | 6 | 78 | 18 | 118 | 1.7 | 50 | SPA 250/5 | 250 | 5 | 3020 | 159 | 75 | 51 | 7 | 215 | 15 | 256.2 | 17.32 | 80 |
| SPA 112/4 | 112 | 4 | 2012 | - | 50 | 32 | 6 | 78 | 33 | 118 | 2.1 | 65 | SPA 250/6 | 250 | 6 | 3020 | 155 | 75 | 51 | 7 | 215 | 22 | 256.2 | 12.87 | 95 |
| SPA 112/5 | 112 | 5 | 2012 | - | 50 | 32 | 6 | 78 | 48 | 118 | 2.33 | 80 | SPA 280/1 | 280 | 1 | 2012 | 112 | 50 | 32 | 4 | 245 | - | 286.2 | 5.84 | 20 |
| SPA 112/6 | 112 | 6 | 2012 | - | 50 | 32 | 6 | 63 | 63 | 118 | 2.85 | 95 | SPA 280/2 | 280 | 2 | 2517 | 124 | 60 | 45 | 4 | 245 | - | 286.2 | 8.26 | 35 |
| SPA 118/1 | 118 | 1 | 1610 | 92 | 42 | 25 | 1 | - | - | 124 | 1.1 | 20 | SPA 280/3 | 280 | 3 | 2517 | 124 | 60 | 45 | 5 | 245 | 2.5 | 286.2 | 8.28 | 50 |
| SPA 118/2 | 118 | 2 | 1610 | - | 42 | 25 | 6 | 84 | 10 | 124 | 1.4 | 35 | SPA 280/4 | 280 | 4 | 3020 | 159 | 75 | 51 | 5 | 245 | 7 | 286.2 | 11.36 | 65 |
| SPA 118/3 | 118 | 3 | 2012 | - | 50 | 32 | 2 | 84 | - | 124 | 2 | 50 | SPA 280/5 | 280 | 5 | 3525 | 175 | 90 | 65 | 5 | 245 | 4.5 | 286.2 | 17.2 | 80 |
| SPA 118/4 | 118 | 4 | 2012 | - | 50 | 32 | 2 | 84 | - | 124 | 2.4 | 65 | SPA 300/1 | 300 | 1 | 2012 | 112 | 50 | 32 | 4 | 275 | - | 306.2 | 6.015 | 20 |
| SPA 118/5 | 118 | 5 | 2012 | - | 50 | 32 | 6 | 84 | - | 124 | 2.75 | 80 | SPA 300/2 | 300 | 2 | 2517 | 124 | 60 | 45 | 4 | 275 | - | 306.2 | 9.45 | 35 |
| SPA 118/6 | 118 | 6 | 2012 | - | 50 | 32 | 6 | 63 | 63 | 124 | 3.13 | 95 | SPA 315/1 | 315 | 1 | 2012 | 112 | 50 | 32 | 4 | 280 | - | 321.2 | 7.81 | 20 |
| SPA 125/1 | 125 | 1 | 1610 | 92 | 42 | 25 | 1 | - | - | 131 | 1.3 | 20 | SPA 315/2 | 315 | 2 | 2517 | 124 | 60 | 45 | 4 | 280 | - | 321.2 | 10 | 35 |
| SPA 125/2 | 125 | 2 | 1610 | - | 42 | 25 | 6 | 91 | 10 | 131 | 1.9 | 35 | SPA 315/3 | 315 | 3 | 3020 | 159 | 75 | 51 | 4 | 280 | 0.5 | 321.1 | 12.26 | 50 |
| SPA 125/3 | 125 | 3 | 2012 | - | 50 | 32 | 2 | 91 | - | 131 | | | | | | | | | | | | | | | |

TAPER BUSH V-BELT PULLEYS “SPB” SECTION

| SPB Section | | | | | | | | | | | | | SPB Section | | | | | | | | | | | | |
|-------------|-----|---|----------|-----|-------|----|-------------|-----|------|-------|-------------|-----|-------------|-----|---|----------|-----|-------|----|-------------|-----|-----|-----|-------------|-----|
| Part Number | B | Z | Bush No. | E | A Max | G | Pulley Type | D | H | C | Weight (kg) | F | Part Number | B | Z | Bush No. | E | A Max | G | Pulley Type | D | H | C | Weight (kg) | F |
| SPB 100/1 | 100 | 1 | 1610 | - | 42 | 25 | 1 | - | - | 107.6 | 0.91 | 25 | SPB 236/1 | 236 | 1 | 2012 | 104 | 50 | 32 | 4 | 193 | 3.5 | 244 | 5.5 | 25 |
| SPB 100/2 | 100 | 2 | 1610 | - | 42 | 25 | 6 | 62 | 19 | 107.6 | 1.25 | 44 | SPB 236/2 | 236 | 2 | 2517 | 117 | 60 | 45 | 0 | 193 | - | 244 | 8.75 | 44 |
| SPB 100/3 | 100 | 3 | 1610 | - | 42 | 25 | 6 | 62 | 38 | 107.6 | 1.95 | 63 | SPB 236/3 | 236 | 3 | 2517 | 117 | 60 | 45 | 5 | 193 | - | 244 | 10.05 | 63 |
| SPB 106/1 | 106 | 1 | 1610 | - | 42 | 25 | 1 | - | - | 113.6 | | 25 | SPB 236/4 | 236 | 4 | 3020 | - | 75 | 51 | 3 | 193 | 16 | 244 | 14.8 | 82 |
| SPB 106/2 | 106 | 2 | 1610 | - | 42 | 25 | - | 67 | 19 | 113.6 | | 44 | SPB 236/5 | 236 | 5 | 3525 | - | 90 | 65 | 3 | 193 | 6 | 244 | 16.14 | 101 |
| SPB 106/3 | 106 | 3 | 1610 | - | 42 | 25 | 6 | 67 | 38 | 113.6 | | 63 | SPB 236/6 | 236 | 6 | 3525 | - | 90 | 65 | - | 193 | 16 | 244 | 19.25 | 120 |
| SPB 112/1 | 112 | 1 | 1610 | - | 42 | 25 | 1 | - | - | 119.6 | 1.15 | 25 | SPB 250/1 | 250 | 1 | 2012 | 104 | 50 | 32 | 4 | 207 | 3.5 | 258 | 6.2 | 25 |
| SPB 112/2 | 112 | 2 | 1610 | - | 42 | 25 | - | 72 | 19 | 119.6 | 1.68 | 44 | SPB 250/2 | 250 | 2 | 2517 | 125 | 60 | 45 | 4 | 207 | - | 258 | 8.75 | 44 |
| SPB 112/3 | 112 | 3 | 1610 | - | 42 | 25 | 6 | 72 | 38 | 119.6 | 2.25 | 63 | SPB 250/3 | 250 | 3 | 3020 | 144 | 75 | 51 | 5 | 207 | - | 258 | 12.5 | 63 |
| SPB 118/1 | 118 | 1 | 1610 | - | 42 | 25 | 1 | - | - | 125.6 | 1.45 | 25 | SPB 250/4 | 250 | 4 | 3020 | 144 | 75 | 51 | - | 207 | 16 | 258 | 12.6 | 82 |
| SPB 118/2 | 118 | 2 | 1610 | - | 42 | 25 | 2 | 78 | - | 125.6 | 2 | 44 | SPB 250/5 | 250 | 5 | 3525 | - | 90 | 89 | 3 | 207 | 6 | 258 | 22.75 | 101 |
| SPB 118/3 | 118 | 3 | 1610 | - | 42 | 25 | 2 | 78 | - | 125.6 | 2.6 | 63 | SPB 250/6 | 250 | 6 | 3525 | - | 90 | 89 | 3 | - | - | 258 | 24.25 | 120 |
| SPB 125/1 | 125 | 1 | 1610 | - | 42 | 25 | 1 | - | - | 132.6 | 1.7 | 25 | SPB 250/6 | 250 | 6 | 3535 | - | 90 | 89 | - | 207 | 16 | 258 | | 120 |
| SPB 125/2 | 125 | 2 | 2012 | - | 50 | 32 | 2 | 82 | - | 132.6 | 2.1 | 44 | SPB 280/1 | 280 | 1 | 2012 | 104 | 50 | 32 | 4 | 237 | 3.5 | 288 | 6.83 | 25 |
| SPB 125/3 | 125 | 3 | 2012 | - | 50 | 32 | 2 | 82 | - | 132.6 | 2.44 | 63 | SPB 280/2 | 280 | 2 | 2517 | 125 | 60 | 45 | 4 | 237 | - | 288 | 9.91 | 44 |
| SPB 125/4 | 125 | 4 | 2012 | - | 50 | 32 | 3 | 82 | 25 | 132.6 | 2.94 | 82 | SPB 280/3 | 280 | 3 | 3020 | 144 | 75 | 51 | 5 | 237 | 6 | 288 | 12.02 | 63 |
| SPB 125/5 | 125 | 5 | 2012 | - | 50 | 32 | 6 | 87 | 69 | 132.6 | 3.8 | 101 | SPB 280/4 | 280 | 4 | 3020 | 144 | 75 | 51 | 5 | 237 | 16 | 288 | 13.94 | 82 |
| SPB 132/1 | 132 | 1 | 1610 | - | 42 | 25 | 1 | - | - | 139.6 | 2.1 | 25 | SPB 280/5 | 280 | 5 | 3525 | 175 | 90 | 89 | 7 | 237 | 6 | 288 | 21.6 | 101 |
| SPB 132/2 | 132 | 2 | 2012 | - | 50 | 32 | 2 | 89 | - | 139.6 | 2.37 | 44 | SPB 280/6 | 280 | 6 | 3525 | - | 90 | 89 | 7 | - | - | 288 | 23.35 | 120 |
| SPB 132/3 | 132 | 3 | 2012 | - | 50 | 32 | 2 | 89 | - | 139.6 | 3.08 | 63 | SPB 280/6 | 280 | 6 | 3535 | 175 | 90 | 89 | - | 237 | 16 | 288 | | 120 |
| SPB 132/4 | 132 | 4 | 2012 | - | 50 | 32 | 3 | 89 | 25 | 139.6 | 3.9 | 82 | SPB 300/2 | 300 | 2 | 2517 | 125 | 60 | 45 | 4 | 257 | - | 308 | | 44 |
| SPB 140/1 | 140 | 1 | 1610 | - | 42 | 25 | 1 | - | - | 147.6 | 2.16 | 25 | SPB 300/3 | 300 | 3 | 3020 | 144 | 75 | 51 | - | 257 | 6 | 308 | | 63 |
| SPB 140/2 | 140 | 2 | 2012 | - | 50 | 32 | 2 | 97 | - | 147.6 | 2.8 | 44 | SPB 300/4 | 300 | 4 | 3020 | 175 | - | 51 | 5 | 257 | - | 308 | | 82 |
| SPB 140/3 | 140 | 3 | 2012 | - | 50 | 32 | 2 | 97 | - | 147.6 | 3.7 | 63 | SPB 300/6 | 300 | 6 | 3525 | - | - | - | - | - | - | 308 | | 120 |
| SPB 140/4 | 140 | 4 | 2517 | - | 60 | 45 | 3 | 100 | 18.5 | 147.6 | 4 | 82 | SPB 300/6 | 300 | 6 | 3535 | 175 | 90 | 89 | - | 257 | 16 | 308 | | 120 |
| SPB 140/5 | 140 | 5 | 2517 | - | 60 | 45 | 3 | 97 | 28 | 147.6 | 4.3 | 101 | SPB 315/1 | 315 | 1 | 2012 | 104 | 50 | 32 | 4 | 272 | 3.5 | 323 | 9.34 | 25 |
| SPB 140/6 | 140 | 6 | 2517 | - | 60 | 45 | - | 100 | 37.5 | 147.6 | 5.1 | 120 | SPB 315/2 | 315 | 2 | 2517 | 125 | 60 | 45 | 4 | 272 | - | 323 | 12.3 | 44 |
| SPB 150/1 | 150 | 1 | 1610 | - | 42 | 25 | 1 | - | - | 157.6 | 2.46 | 25 | SPB 315/3 | 315 | 3 | 3020 | 144 | 75 | 51 | 5 | 272 | 6 | 323 | 14.25 | 63 |
| SPB 150/2 | 150 | 2 | 2012 | - | 50 | 32 | 2 | 107 | - | 157.6 | 3.4 | 44 | SPB 315/4 | 315 | 4 | 3525 | 175 | 90 | 89 | 5 | 272 | 3.5 | 323 | 21.7 | 82 |
| SPB 150/3 | 150 | 3 | 2517 | - | 60 | 45 | 2 | 107 | - | 157.6 | 4.03 | 63 | SPB 315/5 | 315 | 5 | 3525 | 175 | 90 | 89 | 5 | 272 | 6 | 323 | 25.3 | 101 |
| SPB 150/4 | 150 | 4 | 2517 | - | 60 | 45 | 3 | 107 | 18.5 | 157.6 | | 82 | SPB 315/6 | 315 | 6 | 3535 | 175 | 90 | 89 | 5 | 272 | 16 | 323 | 24.14 | 120 |
| SPB 150/5 | 150 | 5 | 2517 | - | 60 | 45 | 3 | 107 | 28 | 157.6 | | 101 | SPB 335/2 | 335 | 2 | 2517 | 125 | 60 | 45 | 4 | 292 | 3.5 | 343 | | 44 |
| SPB 150/6 | 150 | 6 | 2517 | - | 60 | 45 | 3 | 107 | 37.5 | 157.6 | 6.58 | 120 | SPB 335/3 | 335 | 3 | 3020 | 144 | 75 | 51 | 5 | 292 | 6 | 343 | | 63 |
| SPB 160/1 | 160 | 1 | 1610 | - | 42 | 25 | 1 | - | - | 167.6 | 2.92 | 25 | SPB 335/4 | 335 | 4 | 3525 | - | - | - | 5 | - | - | 343 | | 82 |
| SPB 160/2 | 160 | 2 | 2012 | - | 50 | 32 | 2 | 117 | - | 167.6 | 3.91 | 44 | SPB 335/4 | 335 | 4 | 3535 | 175 | 90 | 89 | - | 312 | 3.5 | 343 | | 82 |
| SPB 160/3 | 160 | 3 | 2517 | - | 60 | 45 | - | 117 | - | 167.6 | 4.38 | 63 | SPB 335/5 | 335 | 5 | 3535 | 175 | 90 | 89 | 5 | 292 | 6 | 343 | | 101 |
| SPB 160/4 | 160 | 4 | 2517 | - | 60 | 45 | - | 117 | 18.5 | 167.6 | 5.64 | 82 | SPB 335/6 | 335 | 6 | 3535 | 175 | 90 | 89 | - | 292 | 16 | 343 | | 120 |
| SPB 160/5 | 160 | 5 | 2517 | - | 60 | 45 | 3 | 117 | 28 | 167.6 | 6.6 | 101 | SPB 355/2 | 355 | 2 | 3020 | 144 | 75 | 51 | 4 | 312 | 3.5 | 363 | 15.12 | 44 |
| SPB 160/6 | 160 | 6 | 3020 | - | 75 | 51 | 3 | 118 | 34.5 | 167.6 | 6.8 | 120 | SPB 355/3 | 355 | 3 | 3020 | 144 | 75 | 51 | 5 | 312 | 6 | 363 | 17.23 | 63 |
| SPB 160/8 | 160 | 8 | 3020 | - | 75 | 51 | 3 | 118 | 53.5 | 167.6 | | 158 | SPB 355/4 | 355 | 4 | 3535 | 175 | 90 | 89 | 4 | 312 | 3.5 | 363 | 23.13 | 82 |
| SPB 170/1 | 170 | 1 | 1610 | - | 42 | 25 | 1 | - | - | 177.6 | 3.33 | 25 | SPB 355/5 | 355 | 5 | 3525 | 175 | 90 | 89 | 5 | 312 | 6 | 363 | 28.87 | 101 |
| SPB 170/2 | 170 | 2 | 2012 | - | 50 | 32 | 2 | 127 | - | 177.6 | 4.53 | 44 | SPB 355/6 | 355 | 6 | 3535 | 175 | 90 | 89 | - | 312 | 16 | 363 | 28.35 | 120 |
| SPB 170/3 | 170 | 3 | 2517 | - | 60 | 45 | 2 | 127 | - | 177.6 | 5.7 | 63 | SPB 355/8 | 355 | 8 | 3525 | - | 90 | 89 | - | - | - | 363 | 34.06 | 158 |
| SPB 170/4 | 170 | 4 | 2517 | - | 60 | 45 | 3 | 127 | 18.5 | 177.6 | 6.65 | 82 | SPB 355/8 | 355 | 8 | 3535 | 175 | 90 | 89 | - | 312 | 35 | 363 | | 158 |
| SPB 170/5 | 170 | 5 | 3020 | - | 75 | 51 | 3 | 127 | 25 | 177.6 | 6.7 | 101 | SPB 375/5 | 375 | 5 | 3525 | - | - | - | - | - | - | 383 | | 101 |
| SPB 170/6 | 170 | 6 | 3020 | - | 75 | 51 | - | 127 | 34.5 | 177.6 | 7.6 | 120 | SPB 400/2 | 400 | 2 | 3020 | 150 | 75 | 51 | 4 | 357 | 3.5 | 408 | 18.73 | 44 |
| SPB 170/8 | 170 | 8 | 3030 | - | 75 | 76 | - | 127 | 41 | 177.6 | | 158 | SPB 400/3 | 400 | 3 | 3535 | 175 | 90 | 89 | 5 | 357 | 13 | 408 | 19.85 | 63 |
| SPB 180/1 | 180 | 1 | 1610 | 90 | 42 | 25 | 1 | 132 | - | 187.6 | 2.48 | 25 | SPB 400/4 | 400 | 4 | 3525 | - | 90 | 89 | - | - | - | 408 | 26.6 | 82 |
| SPB 180/2 | 180 | 2 | 2517 | 120 | 60 | 45 | 1 | - | - | 187.6 | 5.6 | 44 | SPB 400/4 | 400 | 4 | 3535 | 175 | 90 | 89 | - | 357 | 3.5 | 408 | | 82 |
| SPB 180/3 | 180 | 3 | 2517 | | | | | | | | | | | | | | | | | | | | | | |

TAPER BUSH V-BELT PULLEYS “SPC” SECTION

| SPC Section | | | | | | | | | | | | | SPC Section | | | | | | | | | | | | |
|------------------|-----|----|----------|-----|-------|----|-------------|-----|---|-------|-------------|-------|------------------|-----|----|----------|-----|-------|----|-------------|-----|-----|--------|-------------|---|
| Part Number | B | Z | Bush No. | E | A Max | G | Pulley Type | D | H | C | Weight (kg) | F | Part Number | B | Z | Bush No. | E | A Max | G | Pulley Type | D | H | C | Weight (kg) | F |
| SPC 200/3 | 200 | 3 | 2517 | 86 | 60 | 45 | 3 | 143 | | 210.2 | 10.3 | 85 | SPC 335/4 | 335 | 4 | 3525 | 114 | | | 7 | 283 | | | | |
| SPC 200/4 | 200 | 4 | 3020 | 90 | 75 | 51 | 3 | 143 | | 210.2 | 11.4 | 111 | SPC 335/5 | 335 | 5 | 3525 | 114 | | | - | 283 | | | | |
| SPC 200/5 | 200 | 5 | 3525 | 90 | 90 | 65 | 3 | 143 | | 210.2 | 16.1 | 136 | SPC 335/8 | 335 | 8 | 3525 | | | | 5 | | | | | |
| SPC 200/6 | 200 | 6 | 3525 | 90 | 90 | 65 | 3 | 143 | | 210.2 | 14.2 | 162 | SPC 355/3 | 355 | 3 | 3525 | 110 | 90 | 65 | - | 298 | 365 | 25.82 | 85 | |
| SPC 200/8 (3525) | 200 | 8 | 3525 | | 90 | 65 | - | | | 210.2 | 18.85 | 213 | SPC 355/4 | 355 | 4 | 3525 | 114 | 90 | 65 | - | 298 | 365 | 33 | 111 | |
| SPC 200/8 (3535) | 200 | 8 | 3535 | | | | 3 | | | | | | SPC 355/5 | 355 | 5 | 3525 | 114 | 90 | 65 | - | 298 | 365 | 33.85 | 136 | |
| SPC 212/3 | 212 | 3 | 3020 | | 75 | 51 | 3 | | | 222.2 | 11.1 | 85 | SPC 355/6 | 355 | 6 | 3525 | 114 | 90 | 65 | - | 298 | 365 | 37.25 | 162 | |
| SPC 212/4 | 212 | 4 | 3020 | | 75 | 51 | 3 | | | 222.2 | 13.05 | 111 | SPC 355/8 | 355 | 8 | 3525 | | 100 | 65 | 5 | | 365 | 49.3 | 213 | |
| SPC 212/6 | 212 | 6 | 3535 | | 90 | 65 | 3 | | | 222.2 | 20.65 | 162 | SPC 375/3 | 375 | 3 | 3525 | | 90 | 65 | - | | 385 | 27.7 | 85 | |
| SPC 224/3 | 224 | 3 | 3020 | 90 | 75 | 51 | 3 | 168 | | 234.2 | 12.7 | 85 | SPC 375/4 | 375 | 4 | 3525 | | 90 | 65 | - | | 385 | 33.5 | 111 | |
| SPC 224/4 | 224 | 4 | 3525 | 90 | 90 | 65 | 3 | 168 | | 234.2 | 16.3 | 111 | SPC 375/5 (3525) | 375 | 5 | 3525 | | 90 | 65 | - | | 385 | 34.4 | 136 | |
| SPC 224/5 | 224 | 5 | 3525 | 90 | 90 | 65 | 3 | 168 | | 234.2 | 16.66 | 136 | SPC 375/5 (3535) | 375 | 5 | 3535 | | | | - | | | | | |
| SPC 224/6 | 224 | 6 | 3525 | | 90 | 65 | 3 | | | 234.2 | 18.73 | 162 | SPC 375/6 | 375 | 6 | 3525 | | 100 | 65 | 7 | | 385 | 39.75 | 162 | |
| SPC 224/8 | 224 | 8 | 3525 | | 90 | 65 | - | | | 234.2 | 24.77 | 213 | SPC 375/8 | 375 | 8 | 4030 | | 110 | 76 | - | | 385 | 56.9 | 213 | |
| SPC 236/3 | 236 | 3 | 3020 | | 75 | 51 | 3 | | | 246.2 | 14.35 | 85 | SPC 400/3 | 400 | 3 | 3525 | 114 | 90 | 65 | - | 343 | 410 | 32.52 | 85 | |
| SPC 236/4 | 236 | 4 | 3525 | | 90 | 65 | 3 | | | 246.2 | 18.87 | 111 | SPC 400/4 | 400 | 4 | 3525 | 114 | 90 | 65 | - | 343 | 410 | 36.9 | 111 | |
| SPC 236/5 | 236 | 5 | 3535 | | 90 | 65 | 3 | | | 246.2 | 16.65 | 136 | SPC 400/5 | 400 | 5 | 3525 | 120 | 90 | 65 | - | 343 | 410 | 37.45 | 136 | |
| SPC 236/6 | 236 | 6 | 3525 | | 90 | 65 | 3 | | | 246.2 | 23.16 | 162 | SPC 400/6 | 400 | 6 | 3525 | 120 | 100 | 65 | 7 | 343 | 410 | 47.1 | 162 | |
| SPC 236/8 | 236 | 8 | 3525 | | 90 | 65 | - | | | 246.2 | 27.94 | 213 | SPC 400/8 | 400 | 8 | 4030 | | 110 | 76 | 7 | | 410 | 61.5 | 213 | |
| SPC 250/2 | 250 | 2 | 3020 | 98 | | | - | 193 | | | | | SPC 425/4 | 425 | 4 | 3525 | | 90 | 65 | - | | 435 | 37.6 | 111 | |
| SPC 250/3 | 250 | 3 | 3020 | 92 | 75 | 51 | - | 193 | | 260.2 | 16.45 | 85 | SPC 425/6 | 425 | 6 | 4545 | | 100 | 89 | - | | 435 | 53.1 | 162 | |
| SPC 250/4 | 250 | 4 | 3525 | 100 | 90 | 65 | 3 | 193 | | 260.2 | 22.57 | 111 | SPC 425/8 | 425 | 8 | 4535 | | 110 | 89 | - | | 435 | 67.65 | 213 | |
| SPC 250/5 | 250 | 5 | 3525 | 102 | 90 | 65 | - | 193 | | 260.2 | 22 | 136 | SPC 425/10 | 425 | 10 | 5050 | | | | - | | | | | |
| SPC 250/6 | 250 | 6 | 3525 | 102 | 90 | 65 | 3 | 193 | | 260.2 | 27.2 | 162 | SPC 450/4 | 450 | 4 | 3525 | 120 | 90 | 65 | - | 393 | 460 | 41.6 | 111 | |
| SPC 250/8 | 250 | 8 | 3525 | | 90 | 65 | - | | | 260.2 | 31.5 | 213 | SPC 450/5 (3525) | 450 | 5 | 3525 | 120 | 100 | 65 | 5 | 393 | 460 | 48.24 | 136 | |
| SPC 265/3 | 265 | 3 | 3525 | | 90 | 2 | 3 | | | 275.2 | 23.5 | 85 | SPC 450/5 (4040) | 450 | 5 | 4040 | | | | - | | | | | |
| SPC 265/6 | 265 | 6 | 3525 | | 90 | 65 | 3 | | | 275.2 | 27.55 | 162 | SPC 450/6 | 450 | 6 | 4535 | 120 | 110 | 89 | - | 393 | 460 | 60.98 | 162 | |
| SPC 265/8 | 265 | 8 | 3525 | | 90 | 65 | - | | | 275.2 | 36.15 | 213 | SPC 450/8 | 450 | 8 | 4535 | | 125 | 89 | - | | 460 | 81 | 213 | |
| SPC 280/3 | 280 | 3 | 3525 | 92 | 90 | 65 | 3 | 223 | | 290.2 | 22.85 | 85 | SPC 475/6 | 475 | 6 | 4535 | | 110 | 89 | 5 | | 485 | 61.3 | 162 | |
| SPC 280/4 | 280 | 4 | 3525 | 100 | 90 | 65 | 3 | 223 | | 290.2 | 25.42 | 111 | SPC 475/8 | 475 | 8 | 4535 | | 125 | 89 | - | | 485 | 56.7 | 213 | |
| SPC 280/5 | 280 | 5 | 3525 | 102 | 90 | 65 | 3 | 223 | | 290.2 | 28.45 | 136 | SPC 500/4 | 500 | 4 | 3525 | 126 | 90 | 65 | - | 443 | 510 | 45.45 | 111 | |
| SPC 280/6 | 280 | 6 | 3525 | 102 | 90 | 65 | - | 223 | | 290.2 | 31.17 | 162 | SPC 500/5 | 500 | 5 | 4040 | 126 | 100 | 65 | 5 | 443 | 510 | 55.69 | 136 | |
| SPC 280/8 | 280 | 8 | 3525 | | 90 | 65 | 3 | | | 290.2 | 39.85 | 213 | SPC 500/6 | 500 | 6 | 4535 | 126 | 110 | 89 | - | 443 | 510 | 67.25 | 162 | |
| SPC 280/10 | 280 | 10 | 4040 | | | | - | | | | | | SPC 500/8 | 500 | 8 | 4535 | | 125 | 89 | - | | 510 | 87.8 | 213 | |
| SPC 300/3 | 300 | 3 | 3525 | 92 | 90 | 65 | 5 | 243 | | 310.2 | 20.35 | 85 | SPC 530/8 | 530 | 8 | 5050 | | 125 | 89 | - | | 540 | 89.31 | 213 | |
| SPC 300/4 | 300 | 4 | 3525 | 100 | 90 | 65 | - | 243 | | 310.2 | 25.55 | 110.5 | SPC 530/12 | 530 | 12 | 6050 | | | | - | | | | | |
| SPC 300/5 | 300 | 5 | 3525 | 104 | 90 | 65 | - | 243 | | 310.2 | 26.5 | 136 | SPC 560/6 | 560 | 6 | 4535 | 130 | 125 | 89 | - | 503 | 570 | 81.78 | 162 | |
| SPC 300/6 | 300 | 6 | 3525 | 104 | 90 | 65 | - | 243 | | 310.2 | 31.85 | 161.5 | SPC 560/8 | 560 | 8 | 4535 | | 125 | 89 | - | | 570 | 98.4 | 213 | |
| SPC 300/8 | 300 | 8 | 3525 | | 100 | 65 | 3 | | | 310.2 | 42.73 | 212.5 | SPC 560/12 | 560 | 12 | 6050 | | | | - | | | | | |
| SPC 315/3 (3525) | 315 | 3 | 3525 | 92 | 90 | 65 | 5 | 258 | | 325.2 | 21.9 | 85 | SPC 590/12 | 590 | 12 | 6050 | | | | - | | | | | |
| SPC 315/3 (3535) | 315 | 3 | 3535 | | | | - | | | | | | SPC 630/6 (4535) | 630 | 6 | 4535 | 130 | 125 | 89 | - | 573 | 640 | 101 | 162 | |
| SPC 315/4 | 315 | 4 | 3525 | 110 | 90 | 65 | 5 | 258 | | 325.2 | 25 | 110.5 | SPC 630/6 (5050) | 630 | 6 | 5050 | | | | - | | | | | |
| SPC 315/5 | 315 | 5 | 3535 | 112 | 90 | 65 | 5 | 258 | | 325.2 | 28.27 | 136 | SPC 630/8 | 630 | 8 | 4535 | | 125 | 89 | - | | 640 | 105.87 | 213 | |
| SPC 315/6 | 315 | 6 | 3525 | 112 | 90 | 65 | 5 | 258 | | 325.2 | 31.25 | 161.5 | SPC 630/10 | 630 | 10 | 5050 | | | | - | | | | | |
| SPC 315/8 | 315 | 8 | 3525 | | 100 | 65 | - | | | 325.2 | 43.67 | 212.5 | SPC 800/6 | 800 | 6 | 5040 | | 125 | 89 | - | | 810 | 136.3 | 162 | |
| SPC 335/3 | 335 | 3 | 3535 | 100 | | | - | 283 | | | | | SPC 800/8 | 800 | 8 | 5040 | | 125 | 89 | - | | 810 | 157.16 | 213 | |

Distag QCS currently manufactures a range of application-specific pulleys for OEMs operating within the material processing industry. All of these pulleys are produced using ductile iron.

ADVANTAGES

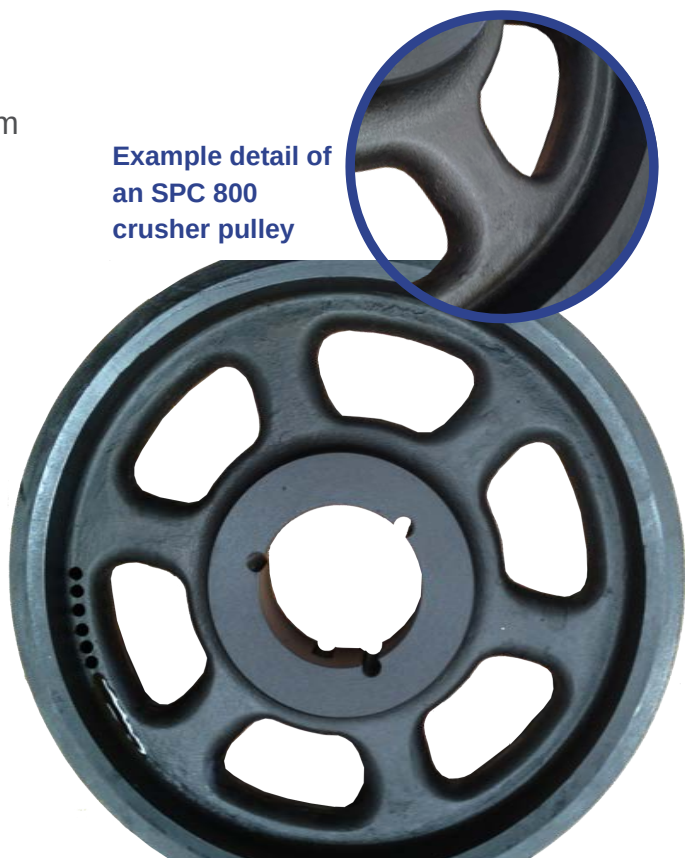
The advantages of manufacturing pulleys from Ductile Iron are:

- Greater impact strength compared with standard pulleys.
- A high shock load resistance.
- Greater tensile strength compared to standard pulleys.

As well as this all pulleys can be produced with offset mounting options and special bush sizes. For technical information or quotations on all bespoke pulleys please contact your local Distag QCS office.

Below is a selection of bespoke pulleys we currently produce:

Example detail of
an SPC 800
crusher pulley



| Pulley Size | T/L Bush Size | Pulley Size | Offset | Bush |
|-------------|---------------|-------------|--------|------|
| SPC 630/6 | 5050 | SPC 280/6 | 40mm | 3525 |
| SPC 710/6 | 5050 | SPC 375/6 | 25mm | 3525 |
| SPC 400/8 | 5050 | SPC 224/8 | 15mm | 3535 |
| SPC 500/8 | 5050 | SPC 315/8 | 35mm | 5050 |
| SPC 630/8 | 5050 | SPC 335/8 | 30mm | 5050 |
| SPC 800/8 | 5050 | | | |
| SPC 1250/8 | 6050 | | | |

TIMING BELT PULLEYS

INTRODUCTION

POWERDRIVE TIMING BELT PULLEYS ARE AVAILABLE TO POWER THE INCREASING NUMBER OF SYNCHRONOUS DRIVES FOUND ON MODERN MACHINERY.

Synchronous Drives are now used to control moving parts in many automotive, industrial, and agricultural applications. They are also the chosen option for most types of automation and robotics, where a positive, zero-slip drive is required. They also provide smooth, low-noise, transmission of power, accommodate wide temperature ranges, and can be fitted into compact locations.

We can produce either pilot bore or taper bore pulleys, in aluminium or steel, with the larger sizes in cast iron.

Tooth Profiles Available:

Imperial – XL, L, H, and XH

HTD Metric – 3M, 5M, 8M, and 14M

T-Series Metric – T2.5, T5, T10, AT5, and AT10



WWW.DISTAG.COM
Get in touch

TULLOW
Distag QCS LTD

Tullow Industrial Estate
Bunclody Rd
Tullow, Co.Carlow
IRELAND
R93 V585

Tel: +353 (0)59 915 1626
Fax: +353 (0)59 915 1264
Email: sales@distag.com

IPSWICH
Distag QCS (UK) LTD

Unit 24
Farthing Road Ind.Est.
Sproughton, Ipswich
Suffolk, UK
IP1 5AP

Tel: +44 (0)1473 744 612
Fax: +44 (0)1473 744 613
Email: info@distag.com

DUNGANNON
Distag QCS (UK) LTD

11 Cookstown Rd
Dungannon
Northern Ireland
BT71 4BB

Tel: +44 (0) 28 92 633380
Fax: +44 (0) 28 92 607231
Email: NIsales@distag.com