

BEARINGS



DISTAG QCS ARE NOW PRODUCING
QUARRY AND MINING INDUSTRY
STANDARD SELF-LUBE BEARING RANGE.

This range of bearing is designed to withstand the toughest of industries and has been improved and adapted to give added protection in poor environments providing a longer life expectancy than standard self lube bearings.

The general housing types are pillow blocks, flange units, take-up units, cartridge units and hanger units. The choice is very much determined by the requirements of the application, although the aesthetic appearance of the machine design is often taken into account. Self Lube units have been designed to meet the needs of both criteria. Cast iron unit castings are made from high-quality cast iron and finished on machined surfaces.

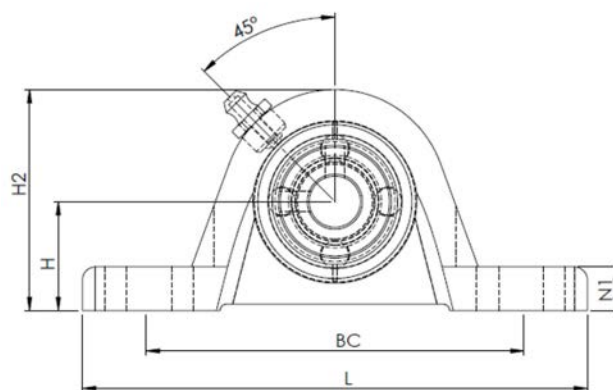
Our Pillow block units are designed with extra strength housings and come complete with triple-sealed inserts for additional bearing protection. Units also come with the preferred .1/8 BSP greasing facilities and in some sizes, there are options for multiple greasing points.

Our 4 Hole Flange bearing range has been designed with similar features to the pillow block including extra strength housings in some sizes and fitted the triple-sealed bearing unit. The housings again come with the preferred .1/8 BSP greasing facility.

This range of bearing is now growing and becoming popular in other industries such as agriculture and recycling.

PILLOW BLOCKS WITH WEBBED HOUSINGS

UCPE/ TNP RANGE



Imperial Range

DISTAG Reference	Alternate Reference	Dimensions (mm)			
		BC	H	H2	N1
UCPE205-16	NP1M	105	36.6	70	16
UCPE207-20-3RS	TNP1.1/4M	127	47.6	94	19
UCPE208-24-3RS	TNP1.1/2M	137	49.2	100	19
UCPE209-28-3RS	TNP1.3/4M	146	54	108	20
UCPE211-32-3RS.2G	TNP2M.2G	171	63.5	126	22
UCPE211-32-3RS	TNP2M	171	63.5	126	25
UCPE213-40-3RS.2G	TNP2.1/2M.2G	203	76.2	150	27
UCPE213-40-3RS	TNP2.1/2M	203	76.2	150	27
UCPE215-48-3RS	TNP3M	217	82.6	163	28

Metric Range

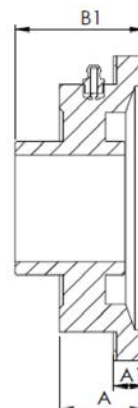
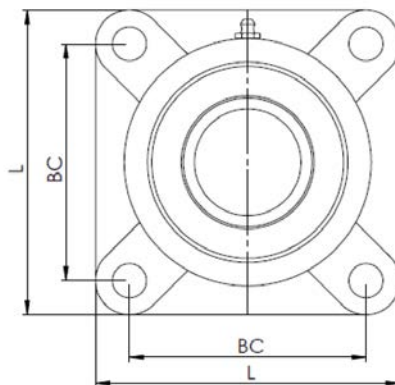
Distag Reference	Alternate Reference	Dimensions				
		BC	L	H	H2	N1
UCPE204	NP20M	95	127	33.3	65	15
UCPE205	NP25M	105	140	36.6	70	16
UCPE206	NP30M	127	167	42.9	83	18
UCPE207-3RS	TNP35M	127	167	47.6	94	19
UCPE208-3RS	TNP40M	137	184	49.2	100	19
UCPE209-3RS	TNP45M	146	190	54	108	20
UCPE210-3RS	TNP50M	159	206	57.2	114	22
UCPE211-3RS	TNP55M	171	219	63.5	126	22
UCPE212-3RS	TNP60M	184	241	69.8	138	25
UCPE213-3RS	TNP65M	203	265	76.2	150	27
UCPE214-3RS	TNP70M	210	266	79.4	156	27



****Although the housings are heavier in design all basic dimensions remain the same and therefore units are interchangeable with various other brands.**

Triple lip seal – designed for applications with a high level of contamination. It consists of a one-piece moulded nitrile seal with three sealing lips, bonded to a protective steel outer pressing which is strongly secured in the outer ring making a highly efficient sealing arrangement. It is not recommended for high speeds.

UCF/ TSF RANGE



Imperial Range

Reference	Distag Reference	Alternate Reference	Dimensions				
			L	BC	A1	A	B1
UCF209-28R3	TSF1.3/4	UCF209-28-3RS	105	137	18	38	49.2
UCF211-32R3	TSF2M.2G	UCFE211-32-3RS.2G	130	162	20	43	58.4
UCF211-32R3	TSF2M	UCFE211-32-3RS	130	162	20	43	58.4
UCF213-40R3	TSF2.1/2M.2G	UCFE213-40-3RS.2G	149	187	20	50	69.7
UCF213-40R3	TSF2.1/2M	UCFE213-40-3RS	149	187	20	50	69.7

Metric Range

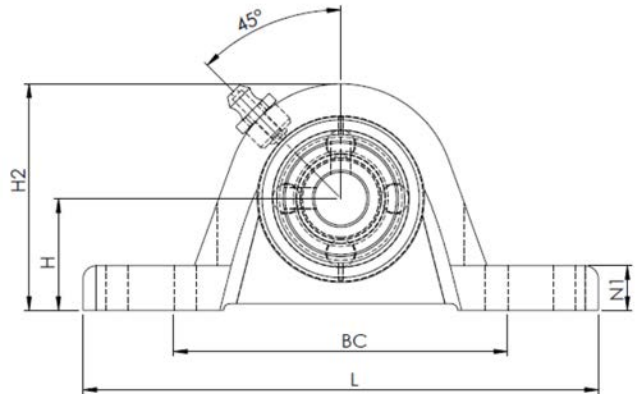
Distag Reference	Alternate Reference	Dimensions				
		BC	L	A1	S	B1
UCF204	SF20	64	86	12	25.5	33.3
UCF205	SF25	70	95	12	27	35.8
UCF206	SF30	83	108	12	31	40.2
UCF207 -3RS	TSF35	92	117	14	34	44.4
UCF208 -3RS	TSF40	102	130	16	36	51.2
UCF210-3RS	TSF50	111	143	18	40	54.6
UCF211-3RS	TSF55	130	162	20	43	58.4
UCF212-3RS	TSF60	143	175	20	48	68.7
UCF213-3RS	TSF65	149	187	20	50	69.7
UCF214-3RS	TSF70	152	193	24	54	75.4



****Although the housings are heavier in design all basic dimensions remain the same and therefore units are interchangeable with various other brands.**

Triple lip seal – designed for applications with a high level of contamination. It consists of a one-piece moulded nitrile seal with three sealing lips, bonded to a protective steel outer pressing which is strongly secured in the outer ring making a highly efficient sealing arrangement. It is not recommended for high speeds.

UCPX/ TMP RANGE



Imperial Range

Distag Reference	Alternate Reference	Dimensions				
		BC	L	H	H2	N1
UCPX08-24 - 3RS	TMP1.1/2	156	222	58.7	113	26
UCPX11-32 -3RS	TMP2	184	260	69.8	139	30
UCPX13-40 -3RS	TMP2 1/2	203	286	76.2	154	32
UCPX15-48-3RS	TMP3	229	330	88.9	177	35

Metric Range

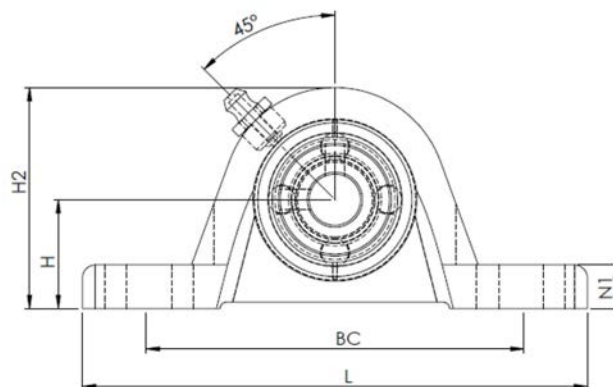
Distag Reference	Alternate Reference	Dimensions				
		BC	L	H	H2	N1
UCPX06	MP30	127	175	47.6	94	20
UCPX08	MP40	156	222	58.7	113	26
UCPX10-3RS	TMP50	171	241	63.5	126	27
UCPX11-3RS	TMP55	184	260	69.8	139	30
UCPX12-3RS	TMP60	203	286	76.2	151	32
UCPX13-3RS	TMP65	203	286	76.2	154	32
UCPX14-3RS	TMP70	229	330	88.9	172	35
UCPX15-3RS	TMP75	229	330	88.9	177	35
UCPX16-3RS	TMP80	283	381	101.6	197	42



****Although the housings are heavier in design all basic dimensions remain the same and therefore units are interchangeable with various other brands.**

Triple lip seal – designed for applications with a high level of contamination. It consists of a one-piece moulded nitrile seal with three sealing lips, bonded to a protective steel outer pressing which is strongly secured in the outer ring making a highly efficient sealing arrangement. It is not recommended for high speeds.

UCPX/ TMP RANGE



Imperial Range

Distag Reference	Alternate Reference	Dimensions				
		BC	L	H	H2	N1
UCPX08-24 - 3RS	TMP1.1/2	156	222	58.7	113	26
UCPX11-32 -3RS	TMP2	184	260	69.8	139	30
UCPX13-40 -3RS	TMP2 1/2	203	286	76.2	154	32
UCPX15-48-3RS	TMP3	229	330	88.9	177	35

Metric Range

Distag Reference	Alternate Reference	Dimensions				
		BC	L	H	H2	N1
UCPX06	MP30	127	175	47.6	94	20
UCPX08	MP40	156	222	58.7	113	26
UCPX10-3RS	TMP50	171	241	63.5	126	27
UCPX11-3RS	TMP55	184	260	69.8	139	30
UCPX12-3RS	TMP60	203	286	76.2	151	32
UCPX13-3RS	TMP65	203	286	76.2	154	32
UCPX14-3RS	TMP70	229	330	88.9	172	35
UCPX15-3RS	TMP75	229	330	88.9	177	35
UCPX16-3RS	TMP80	283	381	101.6	197	42

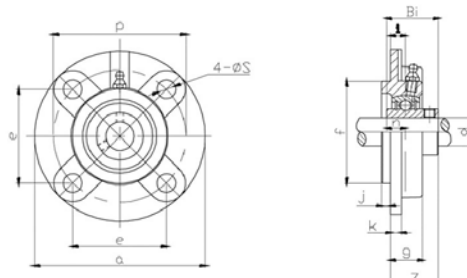


****Although the housings are heavier in design all basic dimensions remain the same and therefore units are interchangeable with various other brands.**

Triple lip seal – designed for applications with a high level of contamination. It consists of a one-piece moulded nitrile seal with three sealing lips, bonded to a protective steel outer pressing which is strongly secured in the outer ring making a highly efficient sealing arrangement. It is not recommended for high speeds.

HEAVY-DUTY- SQUARE FLANGE HOUSINGS UNITS

UCFC FLANGED CARTRIDGE BEARING



Distag Reference	Dimensions				
	BC	L	A1	A	B1
UCFC208 - 3RS	84.8	145	120	26	41.2
UCFC210 - 3RS	97.6	165	138	28	42.6
UCFCX10-32 - 3RS	96.2	162	136	25	40.4

ALSO AVAILABLE

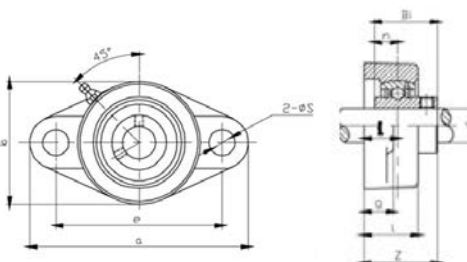


Take-Up Units



Bearing Housing with
End-Cap

TWO-BOLT FLANGE UNITS



Distag Reference	Alternate Reference	Dimensions				
		BC	L	A1	A	B1
UCFL205	SFT25	99	130	68	27	35.7
UCFL207 -3RS	TSFT35	130	161	90	34	44.4
UCFL208 -3RS	TSFT40	144	175	100	36	51.2

Distag Reference	Alternate Reference	Dimensions				
		BC	L	A1	A	B1
UCFL205-16	SFT1	99	130	68	27	35.7
UCFL209-28 -3RS	TSFT 1.3/4	148	188	108	38	52.2

UCP 300 SERIES PILLOW BLOCK

Distag Reference	Dimensions				
	BC	L	H	H2	BOLT SIZE
UCP308	170	220	60	116	M14
UCP310	212	275	75	143	M16
UCP314	280	360	95	187	M22

UCF 300 SERIES SQUARE FLANGE

Distag Reference	Dimensions				
	BC	L	H	H2	BOLT SIZE
UCF310 -3 RS	132	175	19	48	M20
UCF314 - 3RS	178	226	25	61	M22
UCF316 - 3 RS	196	250	27	68	M27



TIMKEN Spherical Roller
Bearing Steel Solid Block
Housed Unit

FORGED BEARING HOUSING

In addition to our range of bearing housing assemblies, Distag QCS supply several OEM's with One-Piece Forged Bearing Housings. The Forged design eliminates the need for welding in-house.

The forged housing is also stronger as compared to any other production method on the market, allowing for high Strength and greater resistance to Shock Loading making it suitable for tough applications.



SPLIT BEARING HOUSING

INTRODUCTION

DISTAG ARE NOW PRODUCING ENGINEERED SPLIT BLOCKS DESIGNED TO DELIVER SOLUTIONS FOR PERFORMANCE AND PRODUCTIVITY.

Split Block Housings

Provide precision fit caps and bases that are precisely aligned. Simplifies the installation of heavy and awkward housings. Give the fitter easier access for bearing assembly or replacement. (All housings stocked are made from cast iron for the range stocked) .

- *Tapered and Parallel Bore options.*
- *Standard Metric Mounting Dimensions that meet the industry-standard dimensions for bolt holes, centre height and shaft diameter requirements.*

Sealing and End Covers – End covers are available to help avoid damage to bearing and housing and are extremely easy to install. We current stock the most popular sealing arrangement of the TSNG seals which are double lipped. Labyrinth, vring and taconite seals available upon request. Sealing helps keep the interior contacts areas debris free and helps keep the bearing properly lubricated.

Locating rings - available depending on customer's requirement of whether the bearing is to be fixed or floating.

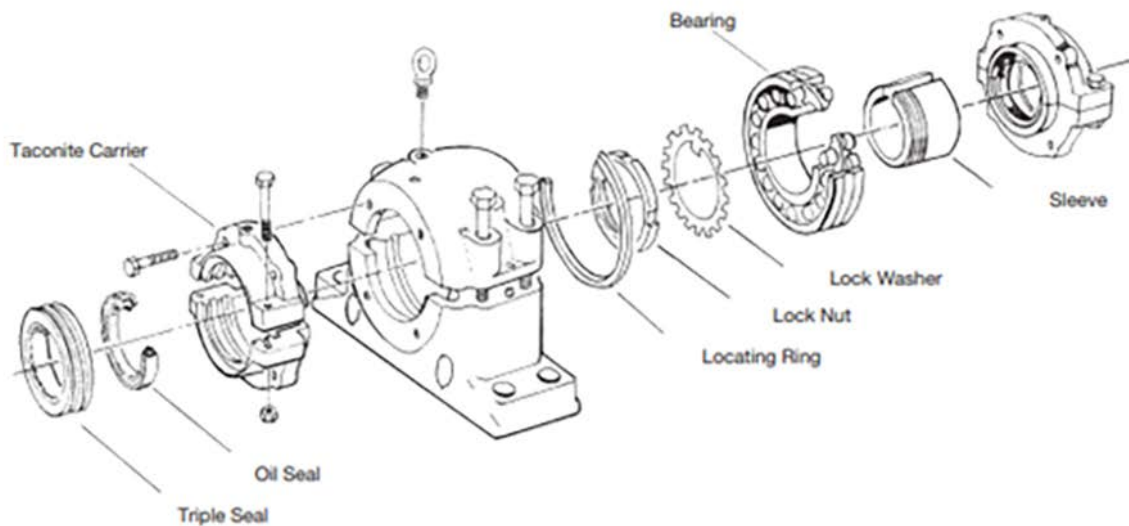
Adapter Sleeve Assembly – For bearings with a tapered bore mounting is made easier with the use of an adapter sleeve. Bearings with a tapered bore require a tighter tolerance fit. Adapter sleeves come with a lock nut and washer to secure in place.



SNH SPLIT BLOCKS

SNH Split Blocks (Available set ups)

Shaft Dia mm.	Housing Reference	Bearing Reference	Adapter Sleeve	Seal Reference	Locating Rings (x2)
50	SNH 511 609	22211 K C3 W33	H311 50	TSNA 511G	FRB100/9.5
55	SNH 512 610	22212 K C3 W33	H312 55	TSNA 512G	FRB110/10
60	SNH513 611	22213 K C3 W33	H313 60	TSNA 513G	FRB120/10
65	SNH515 612	22215 K C3W33	H315 65	TSNA 515G	FRB130/12.5
75	SNH 517	22217 K C3 W33	H317 75	TSNA 517G	FRB150/12.5
90	SNH520 617	22220 K C3 W33	H320 90	TSNA 520G	FRB180/12
100	SNH522 619	23222 K C3 W33	H2322 100	TSNA 522G	FRB200/10.2
3"	SNH 517	22217 K C3 W33	HE317 3	TSNA 517G	FRB150/12.5



FNL Bearing Housings

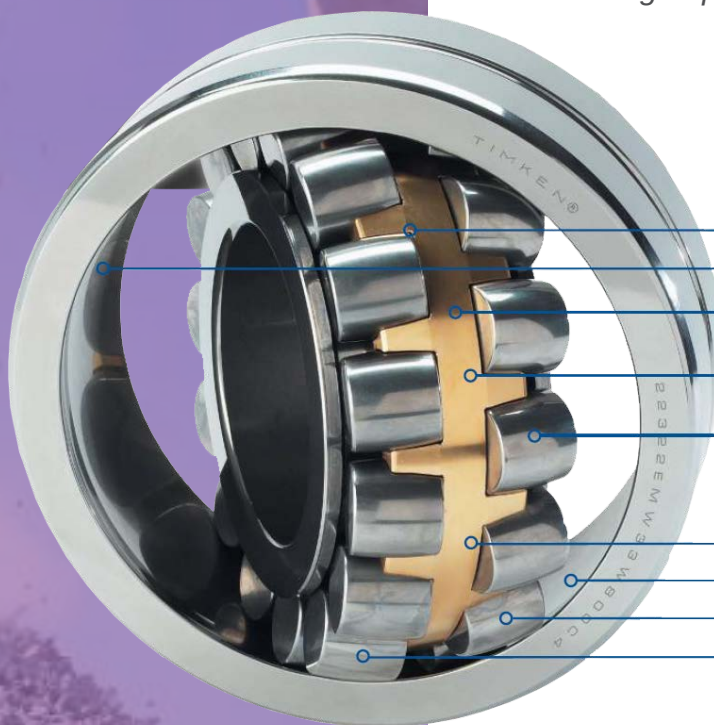
Shaft Dia mm.	Housing Reference	Bearing Reference	Adapter Sleeve	Locating Rings (x2)
65	FNL515A (CLOSED END)	22215 K C3 W33	H315 65	FRB130/10
65	FNL515B (OPEN END)	22215 K C3 W33	H315 65	FRB130/10
75	FNL517A (CLOSED END)	22217 K C3 W33	H317 75	FRB150/10
75	FNL517B (OPEN END)	22217 K C3 W33	H317 75	FRB150/10

SPHERICAL ROLLER BEARING

FOR SHAKER SCREENS

Timken® spherical roller bearings are ideally suited for shaker screen applications because they are manufactured from the finest steels to the highest quality standards.

Our standard bearing material minimizes the impact of debris in harsh environments, like those commonly found in the aggregate industry. At the core of the design is a fully machined brass cage for greater durability and cooler operation. New surface finishing techniques on the roller and raceway surfaces further enhance these benefits. The forged housing is also stronger as compared to any other production method on the market, allowing for high Strength and greater resistance to Shock Loading making it suitable for tough applications.



FEATURES

- Enhanced roller and race surface finishes
- High-strength fully machined brass cage
- Optimized roller and cage pocket design
- Longer rollers due to no centre guide ring

BENEFITS

- Longer bearing and lubrication life
- Lower operating temperatures
- Industry-leading load ratings
- Reduced friction

TIMKEN

SPHERICAL ROLLER BEARING

FOR SHAKER SCREENS

TIMKEN

Our Generic range of bearing housings are always growing, so check in with us to see if we have housing to suit your application.

See our standard range of Housings below:

Our Bearing Range

22219 EKV B C3	Brass Cage Vibrating Screen Bearing
22236KEJW33C3	Timken Spherical Bearing
22315EMW33W800C4	Brass Cage Vibrating Screen Bearing
22316 EAS.MA.T41A C4	Brass Cage Vibrating Screen Bearing
22317 EAS.MA.T41A C4	Brass Cage Vibrating Screen Bearing
22319EMW33W800C4	Timken Spherical Bearing
22320EMW33W800C4	Timken Spherical Bearing
22322EMW33W800C4	Timken Spherical Bearing
22324EMW33W800C4	Timken Spherical Bearing
22328EMW33W800C4	Timken Spherical Bearing
22330EMBW33W800C3	Timken Spherical Bearing
22336EMBW33W40C3	Timken Spherical Bearing
22340EMBW33W45AW800C4	Timken Spherical Bearing
22344KEJW33W45AC3	Timken Spherical Bearing
22348EMBW33W45AC3	Timken Spherical Bearing
23220KEMW33C3	Timken Spherical Bearing
23222CCK C3 W33	Brass Cage Vibrating Screen Bearing
23244EJW33W45AC3	Timken Spherical Bearing
23148EJW507C08C3	Timken Spherical Bearing
24156EJW33W45AC3	Timken Spherical Bearing
24156EMBW33W45AC3	Timken Spherical Bearing



Code	Bearing	Bearing ID MM	Mounting Hole's PCD
BHA22219-250	22219 EKV B C3	95	250
BHA 22317-260	22317 EAS.MA.T41A	85	260
BHA 22319-295	TIMKEN 22319 EMW33W800C4	95	295
BHA 22320-343	TIMKEN 22320 EMW33W800C4	100	343
BHA 22322-343	TIMKEN 22322 EMW33W800C4	110	343
BHA 22326-430	TIMKEN 22326 EMW33W800C4	130	430
BHA 22330-470	TIMKEN 22330 CCJA W33VA405	150	470



PLAIN WRAPPED BEARINGS

INTRODUCTION

Distag QCS, ever-expanding range of Plain Wrapped bearings, Suitable for metric shaft sizes. Allows OEM'S a replaceable wear bushing to suit almost every application.

Distag QCS supply a range of DX bushes to OEM's.

The Boundary lubricating bushings is backed with copper-plated steel with porous bronze sintered on the steel and the yellow polymers embedded into the bores of the bronze.

Oil dents stamped on the surface of the polymer can achieve good lubrication between the bushing and its mating axis. It is of good anti-abrasion and load capacity.

INTRODUCTION-

Distag QCS, ever-expanding range of Plain Wrapped bearings, Suitable for metric shaft sizes. Allows OEM'S a replaceable wear bushing to suit almost every application.

Distag QCS supply a range of DX bushes to OEM's.

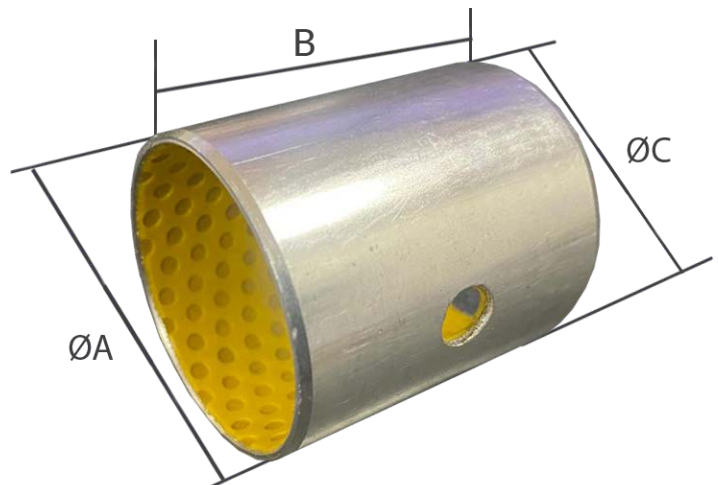
The Boundary lubricating bushings is backed with copper-plated steel with porous bronze sintered on the steel and the yellow polymers embedded into the bores of the bronze.

Oil dents stamped on the surface of the polymer can achieve good lubrication between the bushing and its mating axis. It is of good anti-abrasion and load capacity.

DX BUSHES- TECHNICAL DATA

The chart below shows Technical data for our range of DX Bushes. Bushes are available in a variety of lengths to suit shaft sizes of;

- 20mm, 25mm, 30mm, 35mm, 40mm



Code	A (mm)	B (mm)	C (mm)	Code	A (mm)	B (mm)	C (mm)	Code	A (mm)	B (mm)	C (mm)
DX-020-015	20	15	23	DX-030-030	30	30	33	DX-050-050	50	50	55
DX-020-020	20	20	23	DX-030-040	30	33	33	DX-060-040	60	40	65
DX-025-015	25	15	28	DX-032-020	32	20	36	DX-060-060	60	60	65
DX-025-020	25	20	28	DX-032-030	32	30	36	DX-070-040	70	40	75
DX-025-025	25	25	28	DX-032-040	32	40	36	DX-070-050	70	50	75
DX-025-030	25	30	28	DX-035-030	35	30	39	DX-070-080	70	80	75
DX-030-020	30	20	34	DX-040-040	40	40	44	DX-075-060	75	60	80
DX-030-022	30	22	33	DX-040-050	40	50	44				
DX-030-025	30	25	34	DX-045-045	45	45	50				

Distag QCS DX Bushing Technical Data	
Max Static Load (N/mm2)	140
Max Dynamic Load (N/mm2)	70
Max Sliding Speed- With Grease (m/s)	2.5
Friction coefficient With Grease	.06-.12
Working temperature	-40,120
Recommended Shaft Hardness	>270HB
Recommended Shaft Roughness	Ra=.4 >1.25

DU BUSHES- TECHNICAL DATA

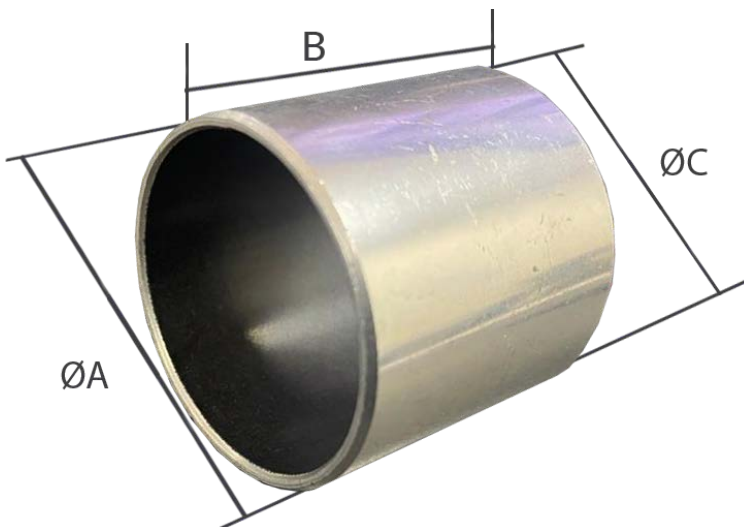
Distag QCS supply a range of DU bushes to OEM's.

The Self-lubricating Multilayer, material structure comprises of steel base + Bronze powder + PTFE & Filler.

This style of bushing has a higher load capacity than the DX style boundary lubricating bushing.

The chart below shows Technical data for our range of DU Bushes. Bushes are available in a variety of lengths to suit shaft sizes of;

- 20mm, 25mm, 30mm, 35mm, 40mm



Code	A (mm)	B (mm)	C (mm)	Code	A (mm)	B (mm)	C (mm)	Code	A (mm)	B (mm)	C (mm)
DU-014-010	14	10	16	DU-030-030	30	30	34	DU-040-050	40	50	44
DU-018-020	18	20	20	DU-032-040	32	40	36	DU-060-060	60	60	65
DU-022-020	22	20	25	DU-035-025	35	25	39	DU-060-070	60	70	65
DU-025-015	25	15	28	DU-040-020	40	20	44	DU-080-060	80	60	85
DU-025-025	25	25	28	DU-040-025	40	25	44				
DU-030-020	30	20	34	DU-040-030	40	30	44				
DU-030-025	30	34	34	DU-040-040	40	45	44				

Distag QCS DU Bushing Technical Data

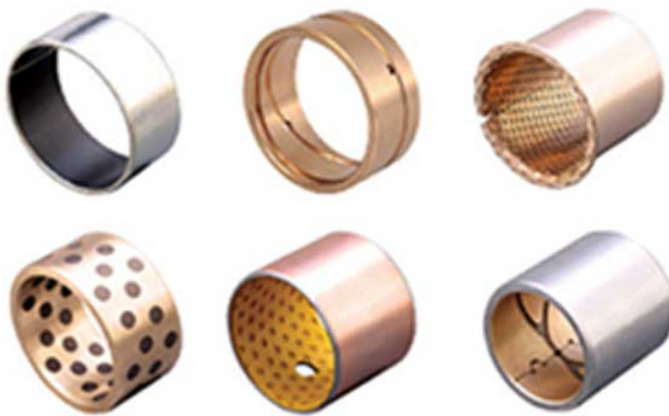
Max Static Load (N/mm2)	250
Max Dynamic Load (N/mm2)	140
Max Sliding Speed- With Grease (m/s)	2.5
Friction coefficient With Grease	.02-.12
Working temperature	-200,280
Recommended Shaft Hardness	>270HB
Recommended Shaft Roughness	Ra=.4 >1.25

ADDITIONAL PLAIN BEARING STYLES-

In addition to our range of DX & DU style bushings, Distag QCS also supply a variety of other styles wear bushings.

Further styles available to Distag QCS include;

Solid Lubricating Bearings,
Oil Sintered Bearings,
Wrapped bronze bushings,
• Steel bearings, C/W Oil grooves.



ADDITIONAL PLAIN BEARING STYLES-

Our ability to source high-quality machined components, combined with our range of Plain Wrapped Bearings, allow us to supply Machined Bosses complete with Wear Bushes for all OEM requirements.

The example shown uses wrapped bronze bearings, which allows for a high Dynamic load, used in a heavy-duty hinging point.



WWW.DISTAG.COM
Get in touch

TULLOW
Distag QCS LTD
Industrial Estate Tullow
Tullow
Co.Carlow
IRELAND
R93 V585

Tel: +353 (0)59 915 1626
Fax: +353 (0)59 915 1264
Email: sales@distag.com

IPSWICH
Distag QCS (UK) LTD
Unit 24
Farthing Road Ind.Est.
Sproughton, Ipswich
Suffolk, UK
IP1 5AP

Tel: +44 (0)1473 744 612
Fax: +44 (0)1473 744 613
Email: info@distag.com

DUNGANNON
Distag QCS (UK) LTD
11 Cookstown Rd
Dungannon
Northern Ireland
BT71 4BB

Tel: +44 (0) 28 92 633380
Fax: +44 (0) 28 92 607231
Email: Nisales@distag.com